



Practices come in all sizes and shapes

From large 10-chair practices requiring ground up builds and complete architectural design and construction, to smaller specialist practices of around 100 square metres, several fundamental elements of the process are crucial to a great outcome. Expectations of service, an understanding of the specific requirements of the practitioner and a commitment to making the process as seamless and stress-free as possible for the customer are all vital.

Last issue, *Australasian Dental Practice* featured a surgery design and construction article covering Medifit's work at Casey Dental in Narre Warren. Casey Dental was a huge project; an architectural landmark for the City of Casey, purpose-built and architecturally designed to allow up to 10 general and specialist dental practitioners to operate efficiently under the same roof. This month, we profile a Medifit project at

the other end of the scale in terms of size and available floor space.

Having obtained premises with a floor space of approximately 44 square metres, one very successful, but private specialist practitioner approached Medifit in 2011 with a desire to create a unique space to service a growing patient base. The immediate challenge for Medifit's design team was how to accommodate a private consulting room, surgery, an inviting reception area, toilet, steri area, a small kitchenette and storage facilities comfortably and efficiently in this relatively small space.

"After 10 years in the industry, we have the experience and systems to deliver great results for practices of all sizes and shapes," said Medifit's Managing Director, Sam Koranis. "Every new project presents it's own challenges to be overcome and this one was no different.

The bottom line is that regardless of our client's budget, practice size and time-frame, Medifit always delivers quality."

From the outset, it was clear that intelligent space planning was crucial to a positive result. Medifit's designers were able to utilise every centimetre of the available space with a floor plan that provided the practitioner with all of the specified requirements. In addition, several unique workflow and access enhancements were created to improve the day-to-day operations. As an example, the surgery/procedure room can be accessed from both the private consulting room and also from the hallway adjoining the reception and waiting area.

Given the space limitations, it is a credit to the ability of Medifit's designers that the practice appears larger than it might have turned out in less skilled hands. Careful use of light textures and subtle accent colours



give the space a contemporary yet elegant look and feel. The light walls and ceilings create an impression of openness and from the moment you enter, you never feel that you are in a small practice.

Reception features underlit bench seating and the counter is embellished with a striking horizontal pattern that provides visual impact and contrast while the feature wall behind the reception seating contains a subtle embossed texture reminiscent of the pressed tin panels in vogue in the early 1900's. This combination of contemporary clean lines and textures that echo the past works together to create an inviting and comfortable waiting area for patients.

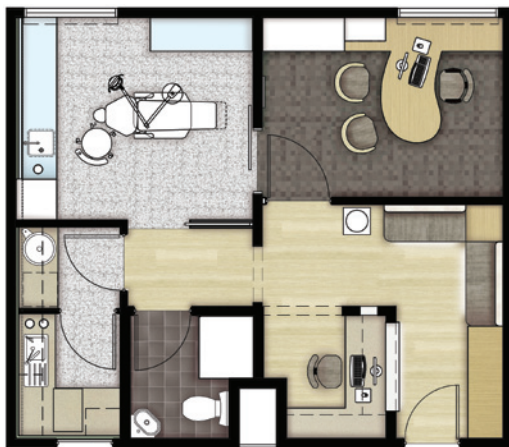
Going through to the surgery, modern lines are maintained throughout all cabinetry and hard surfaces. A light blue corian benchtop and perfectly matched splashbacks bring the sky indoors and provide a calming energy.



Storage is very important in a practice of this size and this was a major consideration in the space planning. Under and overhead cabinets provide ample storage space while keeping all surfaces clean and uncluttered. The treatment room has been designed to accommodate additional overhead cabinets for future storage.

The practice was completed on time and on budget and the practitioner was absolutely thrilled with the final result.

“The practice looks absolutely amazing. I would again like to thank Sam and Francis and everyone else involved for doing an amazing job and for exceeding my expectations! I would especially like to thank Natasha for the wonderful work that she has done on the interior design as I know that she has worked very hard and the practice looks incredible!”



Summary

The Practice

The Practice	WA Oral Medicine
Type of Practice	Specialist oral medicine
Location	West Perth, Western Australia
Size	44 square metres
No of chairs	1

The Team

Design	Medifit
Construction	Medifit

Equipment

Dental Unit	A-dec 1040 Radius Cascade
Sterilisation	Melag Vacuklav 31B+
Suction	Cattani Micro Smart
Compressor	Cattani K100